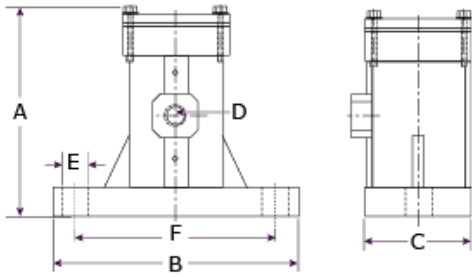


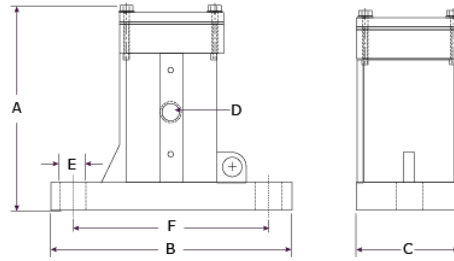
P-Series Piston Vibrators Performance Data										
Vibrator Model	Air Pressure									
	Start Up	20 psi (1.4 bar)			40 psi (2.8 bar)			60 psi (4.1 bar)		
		Speed	Flow	Force	Speed	Flow	Force	Speed	Flow	Force
	psi		cfm	lb		cfm	lb		cfm	lb
bar	cpm	Lpm	kN	cpm	Lpm	kN	cpm	Lpm	kN	
Impact										
P1 IM	15-20	4,000	1.5	250	6,100	2.0	900	8,100	3.0	1240
	1.03-1.38		42	1.1		57	4.0		85	5.5
P1¼ IM	15-20	3,400	2.0	375	4,600	3.5	1440	5,750	5.5	2250
	1.03-1.38		57	1.7		99	6.4		156	10.0
P1-5/8 IM	15-20	3,520	2.2	1450	4,500	5.0	1770	5,600	8.0	2270
	1.03-1.38		62	6.4		142	7.9		227	10.1
P2 IM	15-20	2,750	2.2	1890	4,000	5.5	2370	5,350	9.0	2870
	1.03-1.38		62	8.4		156	10.5		255	12.8
P3 IM	15-20	2,250	7.5	4000	3,000	16.5	4600	3,750	25.5	5600
	1.03-1.38		212	17.8		467	20.5		722	24.9
P4 IM	15-20	1,625	10.0	6200	2,350	20.5	7600	3,100	30.5	9700
	1.03-1.38		283	27.6		580	33.8		864	43.1
Air-Cushioned										
P1 AC	15-20	2,600	1.5	16	3,250	2.0	32	3,950	2.2	48
	1.03-1.38		42	0.1		57	0.1		62	0.2
P1¼ AC	15-20	2,350	2.0	24	2,900	3.5	48	3,400	6.0	72
	1.03-1.38		57	0.1		99	0.2		170	0.3
P1-5/8 AC	15-20	1,650	2.0	41	2,000	5.0	82	2,400	7.5	123
	1.03-1.38		57	0.2		142	0.4		212	0.5
P2 AC	15-20	1,600	2.2	63	1,950	5.0	126	2,250	8.5	189
	1.03-1.38		62	0.3		142	0.6		241	0.8
P3 AC	15-20	1,400	6.5	141	1,700	13.5	282	1,950	20.5	423
	1.03-1.38		184	0.6		382	1.3		580	1.9
P4 AC	15-20	1,100	9.5	251	1,300	20.0	502	1,500	30.0	753
	1.03-1.38		269	1.1		566	2.2		850	3.3
Railcar										
PR-1300	15-20	1,400	6.5	141	1,700	13.5	282	1,950	20.5	423
	1.03-1.38		184	0.6		382	1.3		580	1.9
Matchplate						Air Consumption at 60 psi (4.14 bar)				
MP ¾ IM	12,400 VPM @ 70 psi (4.83 bar)					3.0 cfm - 85 Lpm				
MP1 IM	10300 VPM @ 70 psi (4.83 bar)					3.5 cfm - 99 Lpm				
MP1¼ IM	8,150 VPM @ 70 psi (4.83 bar)					3.8 cfm - 108 Lpm				
MP2 IM	5,000 VPM @ 70 psi (4.83 bar)					8.3 cfm - 235 Lpm				
All Force data exceeding 4800 LB is estimated.										

P-Series Piston Vibrator Dimensions							
Vibrator Model	Weight	A	B	C	D	E	F
		Height	Length	Width	Inlet	Bolt Hole	Bolt Centers
	lb	in	in	in	Inlet	in	in
	kg	mm	mm	mm	NPT	mm	mm
P1 AC or IM	4.00	3.88	4.50	2.00	1/4	1/2	3.50
	1.81	99	114	51		13	89
P1-1/4 AC or IM	9.00	5.63	6.00	2.50	1/4	1/2	4.50
	4.08	143	152	64		13	114
P1-5/8 AC or IM	19.00	7.50	9.50	3.25	1/4	5/8	7.50
	8.62	191	241	83		16	191
P2 AC or IM	19.00	7.50	9.50	3.25	1/4	5/8	7.50
	8.62	191	241	83		16	191
P3 AC or IM	50.00	9.63	10.50	5.00	3/8	7/8	7.75 X 3.25
	22.68	244	267	127		22	197 X 83
P4 AC or IM	104.00	12.25	14.50	6.50	1/2	1	12 X 4
	47.17	311	368	165		25	305 X 102
P6 AC or IM		19.50	14.50	6.50	1/2	1 1/2	11 X 7
	0.00	495	368	165		38	279 X 178
PRR-1300	72.00	14.38	8.00	7.38	3/8	Wedge Base	6.875 X 6.125
	32.66	365	203	187			175 X 156
MP 3/4 IM	2.00	5.38	1.25	1.00	1/4	3/8	N/A
	0.91	137	32	25		10	
MP 1 IM	4.00	5.88	1.50	1.25	1/4	1/2	N/A
	1.81	149	38	32		13	
MP 1-1/4 IM	7.00	7.00	2.00	1.75	1/4	1/2	N/A
	3.18	178	51	44		13	
MP 2 IM	15	10.63	3.38	2.88	1/4	3/4	N/A
	6.80	270	86	73		19	
TMD 1-1/4 IM	9.00	5.63	6.00	2.50	1/4	1/2	4.50
	4.08	143	152	64		13	114
TMD 2 IM	19.00	7.50	9.50	3.25	1/4	5/8	7.50
	8.62	191	241	83		16	191
TMD 3 IM	50.00	9.63	10.50	5.00	3/8	7/8	7.75 X 3.25
	22.68	244	267	127		22	197 X 83
TMD 4 IM	104.00	12.25	14.50	6.50	1/2	1	12 X 4
	47.17	311	368	165		25	305 X 102

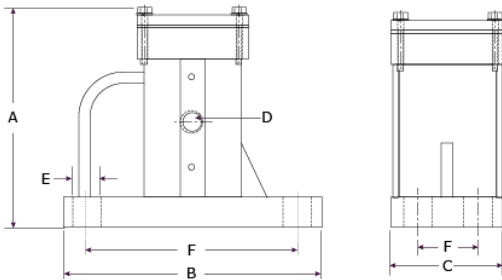
P-Series Piston Vibrators Dimensions



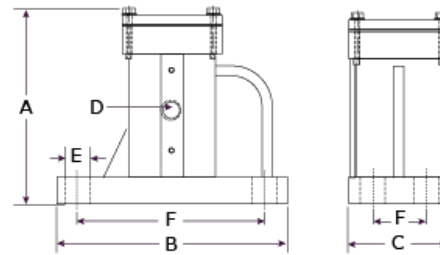
P1, P1 1/4, TMB 1 1/4



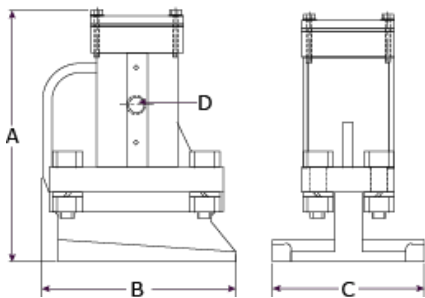
P1 5/8, P2, TMB 2



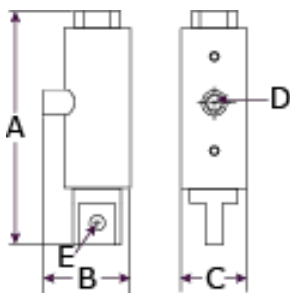
P3, TMB 3



P4, TMB 4



PRR-1300 - Railcar Piston



MP - Matchplate Piston



Distributed By:

ChicagoVibratorProducts
Flow and Compaction

Division of CVP Group

800-842-7284 (P)

866-247-7538 (F)

Solutions@ChiVib.com

www.ChicagoVibrator.com